

ALVIER

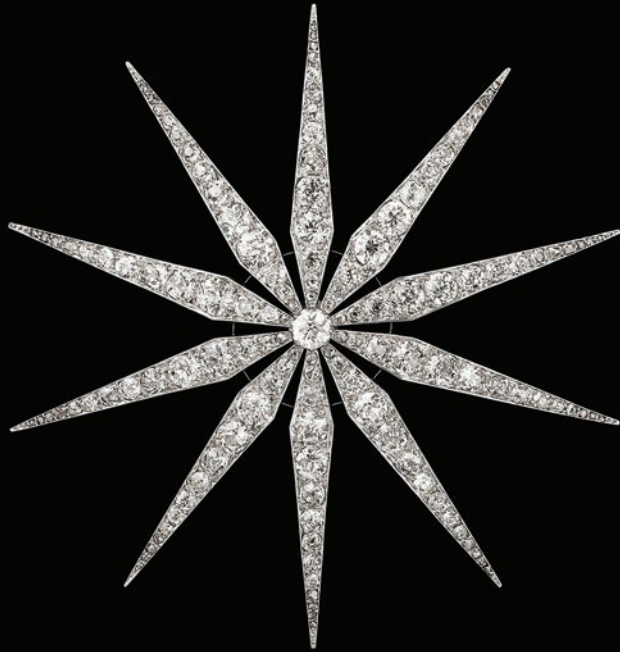
A LA VIEILLE RUSSIE



Where the Unusual is UsualSM



Ruby, diamond, and yellow diamond cherry brooch set in platinum and gold. **Raymond Yard**, American, ca. 1950. L: 2 in.



Ten-pointed old mine-cut diamond starburst brooch set in platinum and gold. English, ca. 1900. D: 3-3/8 in. (approx. 20 cts.)

2



Diamond sunburst brooch/pendant set in platinum and gold centering an old European-cut diamond weighing approx. 6.25 cts.; the balance, old European- and old mine-cut diamonds totaling approx. 15 cts. **Howard & Co.**, New York, ca. 1905. D: 2-1/2 in. Original case and later hair fitting.

3



Diamond and platinum chain necklace, which can also be worn as two matching bracelets. **Mauboussin**, Paris, 1928.
Necklace length: 15 in.

— Platinum and diamond ribbon brooch set with brilliant- and baguette-cut diamonds. French, ca. 1950. L: 2-1/2 in. (approx. 5.50 cts.)

— Diamond bracelet set in platinum and gold.
Tiffany & Co., New York, ca. 1905. L: 7-1/4 in. (approx. 23 cts.)



— Diamond bow brooch set in pierced platinum.

Janesich, French, ca. 1900. L: 3-3/4 in.

— Pair of briolette-cut diamond fringe pendant earrings, each with nine briolette-cut diamonds on trace link chains suspended from a single brilliant-cut diamond. English, contemporary. L: 1-1/2 in.

Diamond cluster necklace set in platinum and gold.

English, ca. 1900. With original case. L: 18-3/4 in.
(diamonds approx. 45 cts.)



Belle Epoque articulated diamond bow brooch set in platinum.
English, ca. 1905. L: 3-1/2 in.



Diamond feather brooch set in silver and gold. English, ca. 1880.
L: 2-3/4 in.



— White enamel, pearl, and gold flower naturalistically modelled as an edelweiss, the enamel with a textured finish imitating the hardy texture of the Alpine edelweiss flower, with a cluster of seven natural pearls, set in gold.

Tiffany & Co., New York, ca. 1890. L: 2-1/4 in. Original case.

— Carved hardstone floral brooch with blue enamel background set with brilliant-cut diamonds in platinum.

Paltscho, Austrian, ca. 1910. L: 2-1/2 in.

Virgin Valley Nevada black opal bead necklace strung with gold beads, each set with carved opal. Opal beads graduate from 10 to 18 mm in diameter. **Tiffany & Co.**, New York, ca. 1890. L: 20 in.



-
- Demantoid garnet and diamond salamander brooch set in platinum and gold. English, ca. 1900. L: 2-1/4 in.
 - Demantoid garnet and old mine-cut diamond salamander brooch, with cabochon ruby eyes and an articulated tail, set in platinum and gold. English, ca. 1900. L: 3-7/8 in.

-
- Demantoid garnet and diamond dragonfly brooch set in platinum and gold. French, ca. 1905. W: 4 in.
 - Ruby and old mine-cut diamond bee brooch with cabochon white opal eyes set in silver and gold. English, ca. 1900. W: 1-3/8 in.
 - Sapphire and old mine-cut diamond cricket brooch with cabochon emerald eyes set in silver and gold. English, ca. 1890. L: 2-5/16 in. (sapphires approx. 6.50 cts., diamonds approx. 4 cts.)



18k gold swag necklace and matching earrings set with diamonds in platinum. **Boucheron**, Paris, ca. 1950. L: 15-3/4 in.



18k gold and platinum brilliant-cut diamond bracelet and earrings. **Cartier**, New York, ca. 1950. Bracelet L: 7-3/8 in. (approx. 10 cts.) Earrings L: 1 in. (approx. 5.50 cts.)



Mid-century 18k gold wirework scroll collar necklace designed as a tubular chain. French, ca. 1950. L: 15-1/2 in.



18k gold necklace of alternating circles. Can be worn as a bracelet and shorter necklace. **Paloma Picasso** for **Tiffany & Co.**, ca. 1975. L: 24 in.



— Gold floral earrings set with a diamond cluster.
Van Cleef & Arpels, Paris, ca. 1940. D: 3/4 in.

— Gold and diamond cluster flower set, comprising a pair of earrings and a ring, of stylized daisy design, the bombé ring with nine flowerheads, set with diamonds.
Van Cleef & Arpels, Paris, ca. 1950. L: 1-1/4 in.

— 18k gold herringbone design bracelet. French, ca. 1940.
L: 7-1/2 in.

— 18k gold bracelet set with brilliant-cut diamonds set in platinum.
Boucheron, Paris, ca. 1950. L: 7-9/16 in.



-
- Cabochon moonstone and diamond cluster ring set in silver and gold. Russian, ca. 1900.
 - Natural black button pearl and diamond cluster ring. **Janesich**, French, ca. 1900.
 - Cushion-cut diamond ring set in platinum, the mount set with brilliant-cuts and baguettes. English, ca. 1900. (center stone approx. 4 cts.)



-
- 18k gold and platinum diamond openwork stepped bombé ring. **Cartier**, Paris, ca. 1955. (diamonds approx. 2.50 cts.)
 - 18k gold bombé ring set with sapphires, rubies, diamonds, and emeralds. **Cartier**, Paris, ca. 1950.
 - Gold bow-tie basketweave ring set with brilliant-cut diamonds. **Marchak**, Paris, ca. 1940.



Aluminum and gold drop earrings set with rubies. French, ca. 1860.
(later post fittings). L: 3 in.



Aluminum and gold curb link bracelet. French, ca. 1840. L: 7 in.
(later fitted case)

For a brief period, aluminum was the “it” metal of the nineteenth century. Although it was discovered in the early 1800s, the general public first encountered this novel metal at the 1855 Paris World Exposition, where it sparked widespread curiosity. That same year, Napoleon III showcased aluminum’s prestige by using it for state dinner tableware reserved for his most honored guests, while others dined with silver. Due to a challenging extraction process, aluminum was initially rarer and more expensive than gold. However, a patented extraction method in 1858 made aluminum more affordable and accessible. At the 1867 Paris Exposition, aluminum sheets, foil, wire, and jewelry were prominently displayed, further cementing its popularity and appeal.



— Art Nouveau 18k gold ring depicting a crab decorated with blue-green enamel, holding a sapphire in its front claws. French, ca. 1890.

24 — 18k gold cable link bracelet. **Sterlé**, Paris, ca. 1950. L: 7-1/4 in.



— Gold wirework and diamond scroll earrings.

Cartier, Paris, ca. 1960. L: 1-1/16 in.
(approx. 1.25 cts. of diamonds in total)

— Gold and diamond flowerhead earrings slightly bombé in form, with five spiral fluted gold petals centered by a diamond cluster.

Cartier, Paris, ca. 1960. W: 1 in.
(approx. 2.10 cts. of diamonds in total)

— Mid-century diamond flower and leaf clip earrings.

Cartier, London, ca. 1950. L: 1-5/16 in. Original Cartier case.
(approx. 5 cts. of diamonds in total)



— Large gold pendant cross decorated with pink enamel flowers and diamonds. **Krementz & Co.**, American, ca. 1890. L: 4 in.

— Gold pendant cross decorated with blue enameled flowers, the reverse set with five picture frames. Russian, ca. 1890. L incl. bail: 3-1/2 in.



Pink topaz and old mine-cut diamond cross pendant set in silver and gold. English, ca. 1850. L incl. bail: 2-1/2 in.



-
- Burma ruby, baguette and pear-shaped diamond stylized leaf brooch set in 18k gold and platinum.
Cartier, New York, ca. 1950. L: 1-7/8 in.
(rubies approx. 5.70 cts., diamonds approx. 11.20 cts.)
 - Ruby and diamond earrings set in platinum.
Cartier, Paris, ca. 1950. W: 1/2 in.



-
- Burma ruby and diamond cluster ring set in platinum with square-cut ruby shoulders. **Raymond Yard**, American, ca. 1955. AGL certificate available. (center ruby approx. 1.40 cts., diamonds approx. 1.90 cts.)
 - Burma ruby and diamond clips set in platinum. **Raymond Yard**, American, ca. 1955. H: 2-1/4 in. AGL certificate available. (rubies approx. 6 cts., diamonds approx. 4.55 cts.)



Burma ruby and baguette- and brilliant-cut diamond bracelet set in platinum. **Raymond Yard**, American, ca. 1935. L: 7 in.
AGL certificate available.
(rubies approx. 8.25 cts., diamonds approx. 8 cts.)



— 18k gold brooch decorated with diamonds and the profile of a woman's head. **Frédéric-Charles-Victor de Vernon**, French, ca. 1890. L: 1-3/4 in.

— Pair of 15k two-color gold, platinum, and red enamel pheasant brooches. English, ca. 1890. L: 2-1/4 in.

— 18k gold owl ring set with old mine diamond eyes. **Paul Robin**, French, ca. 1875.

— Platinum and 15k gold tubular double cufflinks. English, ca. 1895.

— Carved moonstone double cufflinks set in platinum with a calibre sapphire and diamond border. English, ca. 1915.

— 15k gold three-dimensional stickpin of a dog in his kennel. English, ca. 1890. W: 3/4 in.



— Pear-shaped diamond and emerald swag necklace set in platinum and gold. English, ca. 1900. L: 14-3/4 in.

— Peridot and diamond lily pad brooch set in 18k gold and platinum. **Schlumberger** for **Tiffany & Co.**, New York, ca. 1960. D: 1-1/2 in.



Pavé diamond dagger brooch set in 18k gold with red coral and cabochon turquoise scabbard.

Donald Claflin for **Tiffany & Co.**, New York, ca. 1960. L: 3-1/4 in.



Egyptian Revival faience and hardstone necklace, strung on wire with gold fittings. Ca. 1870. D: 4-1/2 in.

Provenance: Retailled by A La Vieille Russie, ca. 1950.

This design takes inspiration from Egyptian “wesekh” style necklaces, a term meaning “the broad one.” The necklace shape was inspired by ancient floral collars.



— Micromosaic hoop earrings decorated with beetles and trailing flowers, set in gold. Ca. 1840, possibly Italian. L: 1-1/2 in.



— Egyptian Revival gold and multi-colored enamel brooch of a Pharaoh’s profile with a carved carnelian face. English, ca. 1890. L: 1-1/2 in.



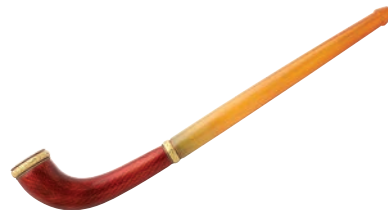
-
- Carved rock crystal clip set in platinum, with diamonds and natural pearls. American, ca. 1920. L: 2-1/4 in.
 - Light blue lacquer, onyx, and diamond brooch set in platinum, with novel mechanical clip attachment. **Cartier**, Paris, ca. 1905. L: 1-1/4 in.

-
- Crown rose diamond and pear-shaped old mine-cut diamond chandelier earrings set in 18k gold. French, ca. 1890. L: 2-3/8 in. (approx. 3.10 cts.)
 - Onyx and diamond pendant hoop earrings set in platinum. English, ca. 1905. L: 1-1/2 in.

Fabergé



Fabergé



— Ruby, gold, and amboyna wood miniature egg pendant, formed as a whimsical smiling fish. **Fabergé**, workmaster August Hollming, St. Petersburg, ca. 1900. L: 1-1/8 in. (incl. bail).

— Gold and bowenite miniature egg pendant, featuring an elephant perched atop the egg. **Fabergé**, St. Petersburg, ca. 1895. Overall length: 7/8 in. (incl. bail). Egg: 7/16 in.

Gold and brilliant red guilloché enamel cigarette holder with a carved amber mouthpiece. **Fabergé**, workmaster Eduard Helenius, St. Petersburg, ca. 1908. Inventory no. 16960.

Sold to Honorable John Ward of Dudley House Park Lane at the Fabergé London shop in 1908 for 6£/10s.

Fabergé

Fabergé



42 Hollywood and gilded silver double photo frame, with wood strut.
Fabergé, workmaster V. Aarne, St. Petersburg, ca. 1890. H: 5-1/4 in.



Circular gold and white enamel frame.
Fabergé, workmaster H. Wigström, St. Petersburg, 1904-1908.
D: 2-1/2 in.

Fabergé



Hollywood and gold double folding frame.
Fabergé, workmaster A. Nevalainen, St. Petersburg, ca. 1900. With original case. Closed: 5-1/2 x 3-9/16 in., Open: 5-1/2 x 6-15/16 in.



Blue enamel and diamond star tiara, mounted in silver and gold.
With brooch fittings for each of the stars. English, ca. 1870.



48 18k gold twist necklace. **Cartier**, Paris, ca. 1950. L: 15-3/4 in.



18k long gold chain, each link made of five framed panels with scroll borders. Converts into a pair of necklaces and a bracelet. English, ca. 1830. L: 43 in.



Sapphire geometric bracelet set in platinum and gold.
Paul Flato, American, ca. 1930. L: 7-1/2 in.



— Pavé brilliant-cut diamond ring set with cabochon onyx, in 18k white gold. **Cartier**, French, ca. 1980.
— Bombé cluster ring set with seven moonstones and ten diamonds in a gold ball mount. English, ca. 1960.



— Platinum and diamond channel-set necklace suspending a large natural blister pearl drop. French, ca. 1910. L: 11 in.

The large natural blister pearl has been carved and mounted in platinum to form a locket.

— 15k gold necklace decorated with a fringe of alternating cushion-cut aquamarines and pink topaz. English, ca. 1890. L: 17 in. Later fitted case.

©2024 By A La Vieille Russie, Inc. All rights reserved. DCA. #0521211. Additional cataloging can be found on alvr.com



A LA VIEILLE RUSSIE



745 Fifth Avenue, 4th Floor

New York, NY 10151

+1.212.752.1727 www.ALVR.com ALVR@ALVR.com

ALVR
Established 1851

Where the Unusual is UsualSM